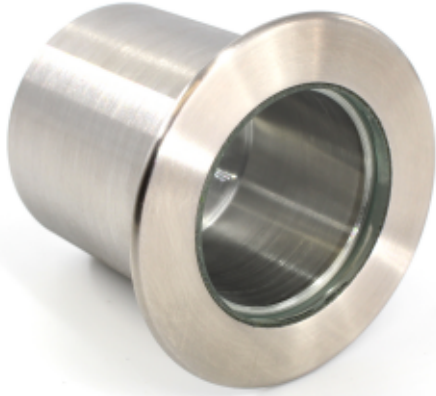


PRODUCT SPECIFICATION SHEET

UFO P1 Paver



Rev. C1



TECHNICAL INFORMATION

Lens	30mm lens, clear or frosted
Beam angle	65°
Material	316 stainless steel
Finishes available	Natural stainless steel
Weight	180g
Mounting hole size	36mm
Ferrule size	M10 or 8mm smooth
Min. fibre size	2mm
Max. fibre size	8mm

Our range of classic paver fittings are all manufactured from hard wearing, corrosion resistant 316 stainless steel, and fitted with high quality toughened glass.

Available in a wide range of sizes, paver fittings can generally be used with fibre sizes ranging from 2mm up to 8mm diameter. This is dependant on the size of ferrule the fitting can accept.

All pavers are supplied in natural stainless steel and are most types are available with a choice of clear or frosted glass.

The P1 is a round walkover paver with a 47mm diameter flange and a total depth of 40mm. Fitted with a 30mm diameter toughened glass front which can be supplied in either clear or frosted versions.

ORDERING CODES

MODEL	LENS		FERRULE SIZE	
UFO P1	Clear	C	M10	M10
	Frosted	F	8mm	8mm
UFO P1				

