

PRODUCT SPECIFICATION SHEET

UFO P20 Paver



Rev. C1



TECHNICAL INFORMATION

Lens	30mm clear with 13mm clear inside
Beam angle	40° - 60°
Material	316 Stainless steel
Finishes available	Stainless steel
Weight	84.2g
Mounting hole size	36mm
Ferrule size	M10 or 8mm
Min. fibre size	2mm
Max. fibre size	8mm

Our range of classic paver fittings are all manufactured from hard wearing, corrosion resistant 316 stainless steel, and fitted with high quality toughened glass.

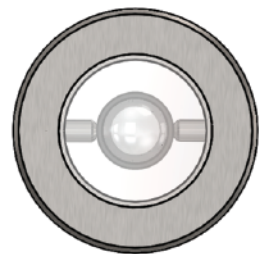
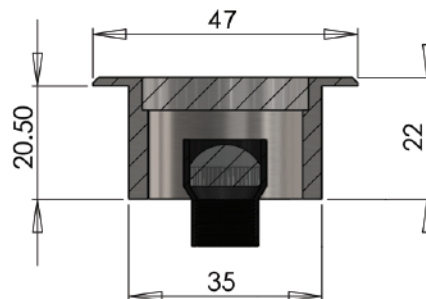
Available in a wide range of sizes, paver fittings can generally be used with fibre sizes ranging from 2mm up to 8mm diameter. This is dependant on the size of ferrule the fitting can accept.

All pavers are supplied in natural stainless steel and most types are available with a choice of clear or frosted glass.

The P20 is a medium walkover paver with a 48mm round flange and a total depth of 32mm. Fitted with a 30mm diameter toughened clear glass front. This fitting also contains an internal tiltable trumpet & lens which allows the light beam to be angled and focussed.

ORDERING CODES

MODEL	LENS		FERRULE SIZE	
UFO P20	Clear	C	M10	M10
			8mm	8mm
UFO P20				



Universal Fibre Optics Ltd
Home Place \ Coldstream
TD12 4DT \ UK
+44 (0)1890 883416 \ www.ufo.lighting

Universal Fiber Optics USA LLC
1749 Northgate Blvd
Sarasota \ FL34234 \ USA
941-343-8115 \ www.fiberopticlighting.com

UFO Licht GmbH
Friendsfactory AG \ Gutenbergstraße 1
85737 Munchen \ Deutschland
+49 (0)9491 955880 \ www.ufo-licht.de